

Portable Scanner A3

PSA-Series



01 HD CAMERA

Using wide angle HD camera, it takes only one second to capture the image of the scanned object. With the built-in software, the user could also record video

02 FLEXIBLE ARM DESIGN

The flexible arm allows the user to capture the image from any angles

03 ADJUSTABLE LIGHT

With the flexible LED light, the user can adjust the lighting angle to achieve the best effect

04 ENERGY EFFICIENT

Power supply by USB, low energy use

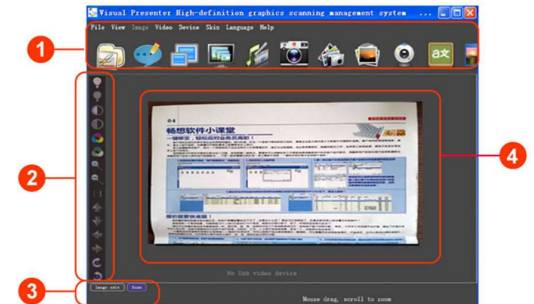
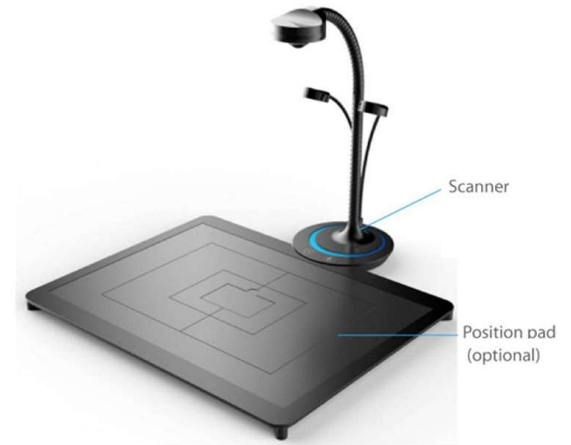


- Main Camera: 5 MP CMOS Active Pixels
- Optical Format: 1/3 inch"
- ctive Pixels Max: 2592H X1944V
- Image Resolution: 2592H X1944V"
- Shooting area: A3
- Second Camera: 2 MP CMOS Active Pixels
- Operating temperature: -30 to +70 ° C
- Power supply: USB POWER CABLE"
- Power Consumption: <220mW
- Suspend Current : <5 mA
- One LED Light
- Communication Interface: USB2.0 With UVC
- AGC/AEC/White Balance: Auto



Specifications

Shooting area	A3 (MAX)	A3 (MAX)
Pixels	5Mega	8Mega
Lens	120° Wide-angle lens	120° Wide-angle lens
Resolution	2592×1944, 2048×1536, 1600×1200, 1280×1024, 1024×768, 1024×510, 800×600, 640×480, 320×240, etc	3264*2448,2592×1944, 2048×1536, 1600×1200, 1280×1024, 1024×768, 1024×510, 800×600, 640×480, 320×240, etc
Scanning image format	jpg	jpg
Output document format	pdf,doc,txt,excel,ppt,E-mail	pdf,doc,txt,excel,ppt,E-mail
Recording video format	avi	avi
Light Compensation	Yes	Yes
Response time	< 500ms	< 500ms
Light	Two sides(led light source)	Two sides(led light source)
Interface	USB2.0	USB,HDMI,VGA and Power port
Power supply	< 500ma	< 500ma
Connection Way	USB2.0	USB,VGA and HDMI
AGC/AEC/White balance	Auto	Auto
Image management/editing	Exposure, sharpness, color, brightness, saturation, clarity, grayscale, color, contrast, white balance, etc	Exposure, sharpness, color, brightness, saturation, clarity, grayscale, color, contrast, white balance, etc
N.W./G.W.	0.87Kg/1.5Kg	0.87Kg/1.5Kg
	8, Aluminum alloy suitcase	



- 1 Shortcut key
- 2 Image adjustment
- 3 Scan button
- 4 Image screen